

Product Information



Monolec® GFS Engine Oil (8430-8450)

Superior Single Grade Oil Extends Drains in Diesel Engines

.....

Monolec® GFS Engine Oils are a family of SAE 30 through 50 straight-grade engine oils formulated for extended drain service, primarily in off-road diesel engines. They contain Monolec, LE's exclusive wear-reducing additive, and are specified mostly for engines but are also sometimes used in industrial applications, such as air compressors.

Beneficial Qualities

Technologically Superior

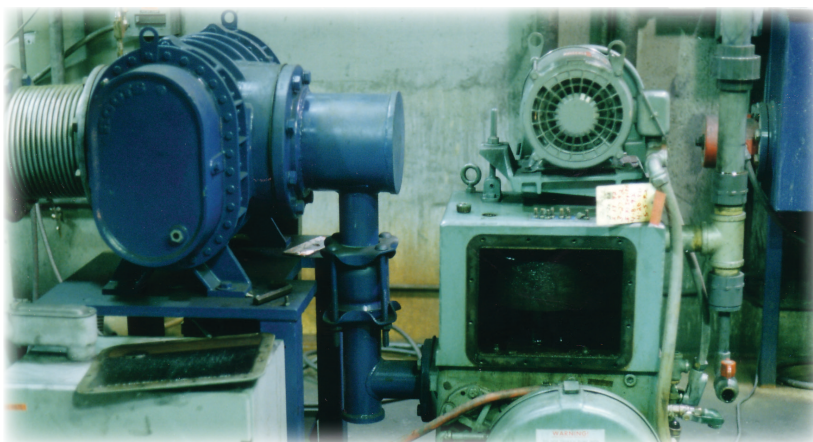
- Contains high quality base fluid for excellent oxidation resistance and film strength
- Keeps engines clean with exceptional detergency
 - Controls formation of deposits in piston ring zones and valve areas
- Protects against rust and corrosion

Long Lasting

- Exhibits excellent oxidation stability and detergency
- Delivers longer effective oil life than ordinary engine oil
 - Extends drain intervals
 - Reduces oil consumption

Available SAE Grades

- 30 (8430)
- 40 (8440)
- 50 (8450)



Proprietary Additives

LE's proprietary additives are used exclusively in LE lubricants. Monolec® GFS Engine Oil contains Monolec.

Monolec® wear-reducing additive creates a single molecular lubricating film on metal surfaces, vastly increasing oil film strength without affecting clearances. An invaluable component in LE's engine oils, industrial oils and many of its other lubricants, Monolec allows opposing surfaces to slide by one another, greatly reducing friction, heat and wear.



Asset Reliability Solutions™

www.LElubricants.com • 800-537-7683



Technical Data

Monolec® GFS Engine Oil

	8430	8440	8450
Color	Red	Red	Red
SAE Grade	30	40	50
Relative Density @ 60°F/60°F, ASTM D1298	0.882	0.885	0.889
Viscosity @ 100°C, cSt, ASTM D445	11.88	16.10	19.84
Viscosity @ 40°C, cSt, ASTM D445	105.7	165.4	219.5
Viscosity Index ASTM D2270	95	95	95
Viscosity-HTHS @ 150°C, cP, ASTM D4683	≥2.900	≥3.700	≥3.700
Viscosity-CCS @ -20°C, cP, ASTM D5293	-	-	-
Flash Point °C (°F), (COC), ASTM D92	218 (425)	232 (450)	246 (475)
Pour Point °C (°F), ASTM D97	-27 (-17)	-24 (-11)	-18 (0)
Copper Corrosion	1b	1b	1b
Ash—Sulfated %, ASTM D874	1.0	1.0	1.0
Acid Number mg KOH/g, ASTM D664	2.50	2.50	2.50
Base Number ASTM D2896	10.0	10.0	10.0

Performance Requirements Met or Exceeded

- API-SAE Service CF/SJ (Unlicensed)
- Caterpillar TO-2
- CCMC D-4, D-5
- DB 226.0
- DB 227.0
- Detroit Diesel
- Ford ESE M2C-153-E
- GM 6094M
- Mack EO-K
- Mack EO-K/2
- MIL-L-2104E
- MIL-L-46152E
- USDA H2
- VW 501.01

Typical Applications

- Off-road diesel engines
- Air compressors

Recommendations

- Not for use in equipment with silver alloy bearings, such as EMD (Electro-Motive Division of GM).
- With any engine oil, it is good practice to employ a used oil monitoring program to safely optimize extended drain intervals.



Monolec® is a registered trademark of Lubrication Engineers, Inc.

LI30049 Rev. 04-19